

52/128

# THE POLO CLUB OPEN SPACE PLAT ONE

SITUATE IN SECTION 35, TOWNSHIP 46 SOUTH, RANGE 42 EAST  
PALM BEACH COUNTY, FLORIDA.

BEING A REPLAT OF A PORTION OF "THE POLO CLUB PLAT I", A P.U.D., AS RECORDED  
IN PLAT BOOK 52, PAGES 35 - 36.

JULY, 1985

SHEET 5 OF 6

128

STATE OF FLORIDA  
COUNTY OF PALM BEACH

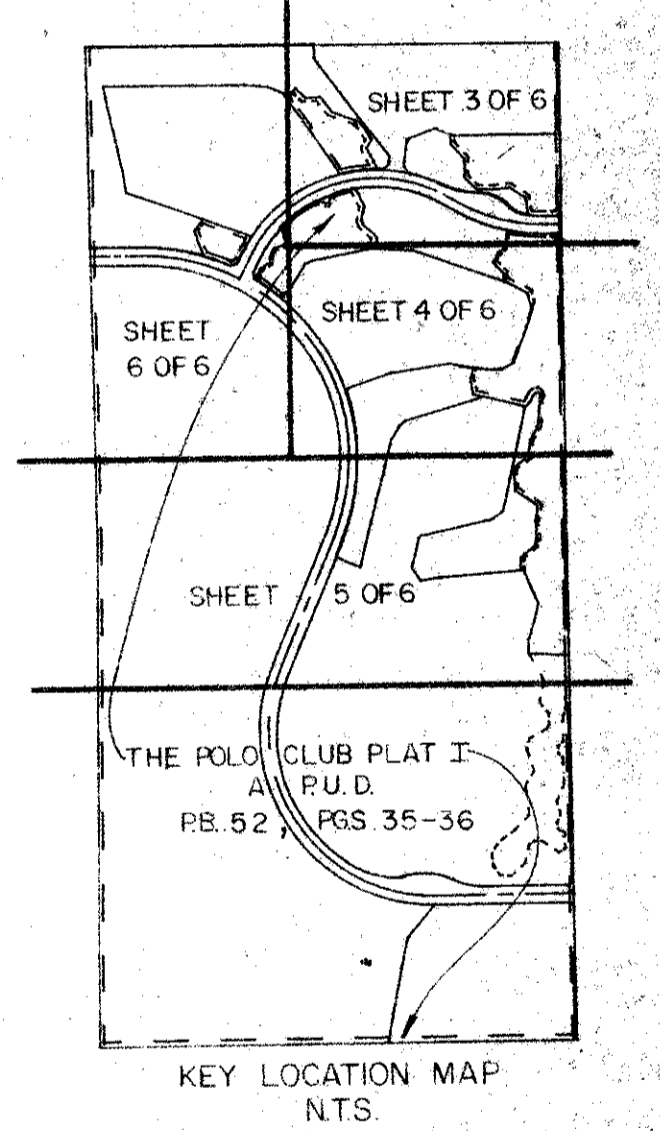
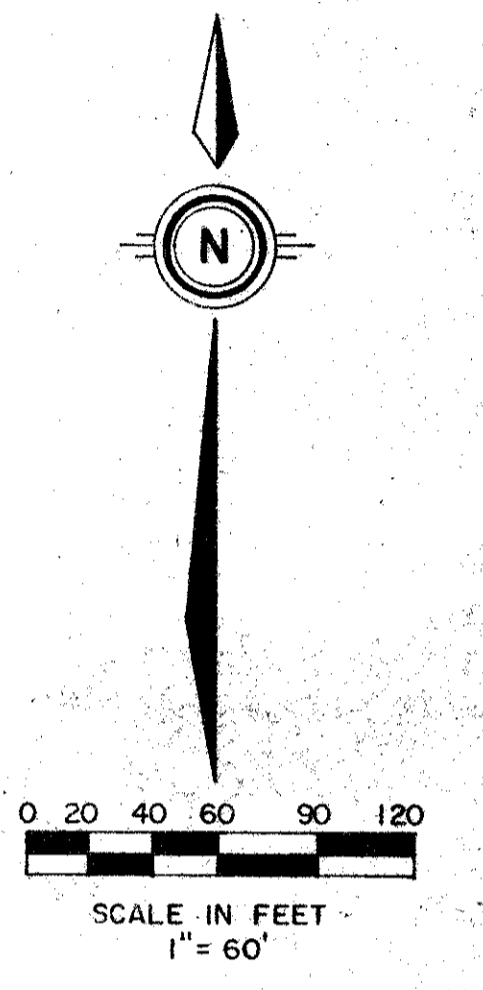
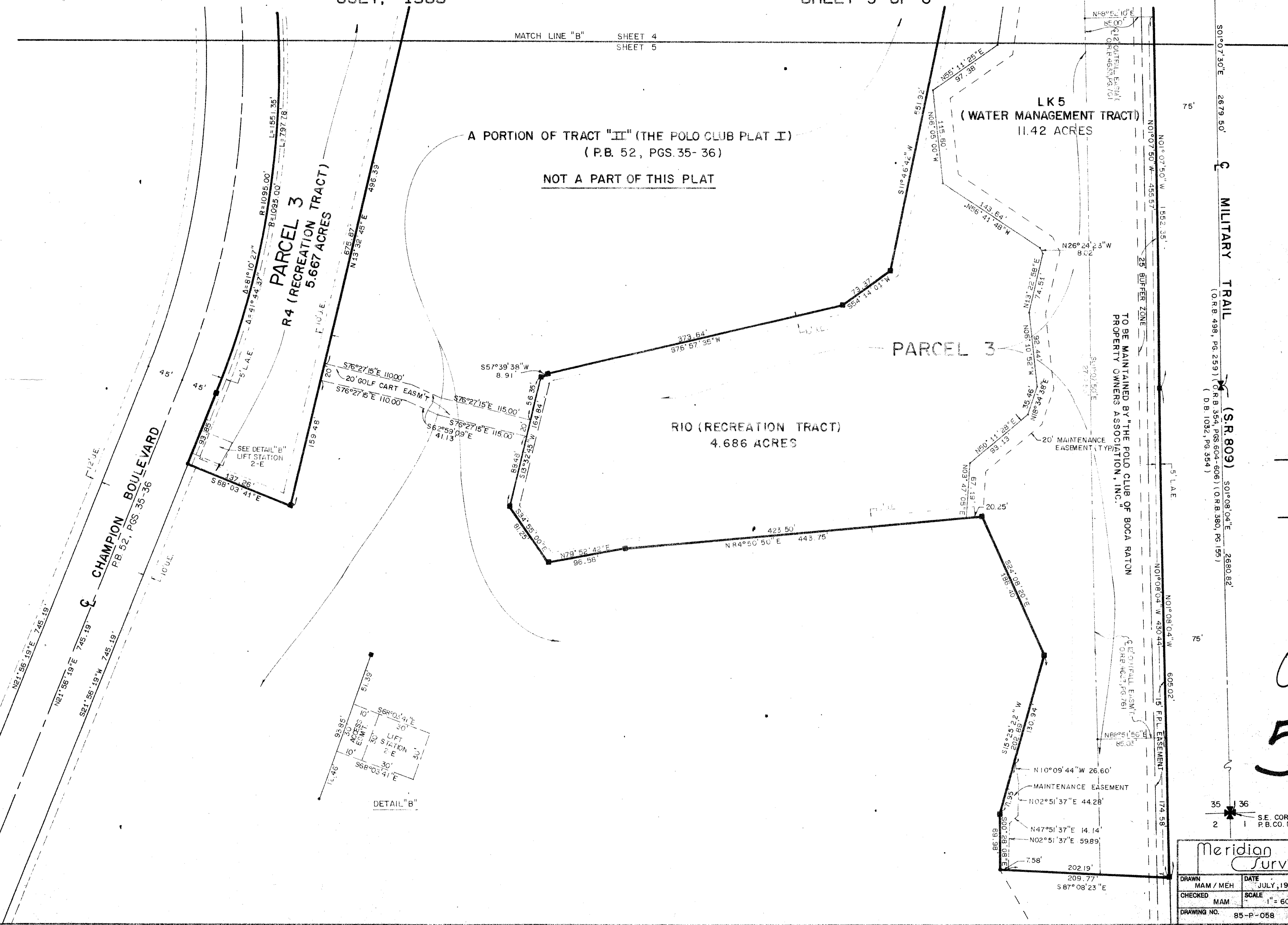
THIS PLAT WAS FILED FOR  
RECORD  
THIS \_\_\_\_\_ DAY OF \_\_\_\_\_  
AD, 198 \_\_\_\_\_ AND DULY RECORDED  
IN PLAT BOOK \_\_\_\_\_ ON PAGES  
\_\_\_\_\_ AND \_\_\_\_\_

JOHN B. DUNKLE, CLERK  
BY: \_\_\_\_\_, D.C.

DRAWING NUMBER

DRAWING NUMBER

DRAWING NUMBER



0436-303  
52/128

|  |                    |  |  |
|--|--------------------|--|--|
| Meridian<br>Surveying and mapping inc. |                    | 2328 SO. CONGRESS AVE.<br>WEST PALM BEACH, FL.     |  |
| DRAWN<br>MAM / MEH                     | DATE<br>JULY, 1985 | S.E. COR. SEC. 35-46-42<br>P.B. CO. DISC. IN CONC. |  |
| CHECKED<br>MAM                         | SCALE<br>1" = 60'  | THE POLO CLUB OPEN SPACE PLAT ONE                  |  |
| DRAWING NO.<br>85-P-058                |                    |  |  |